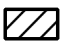
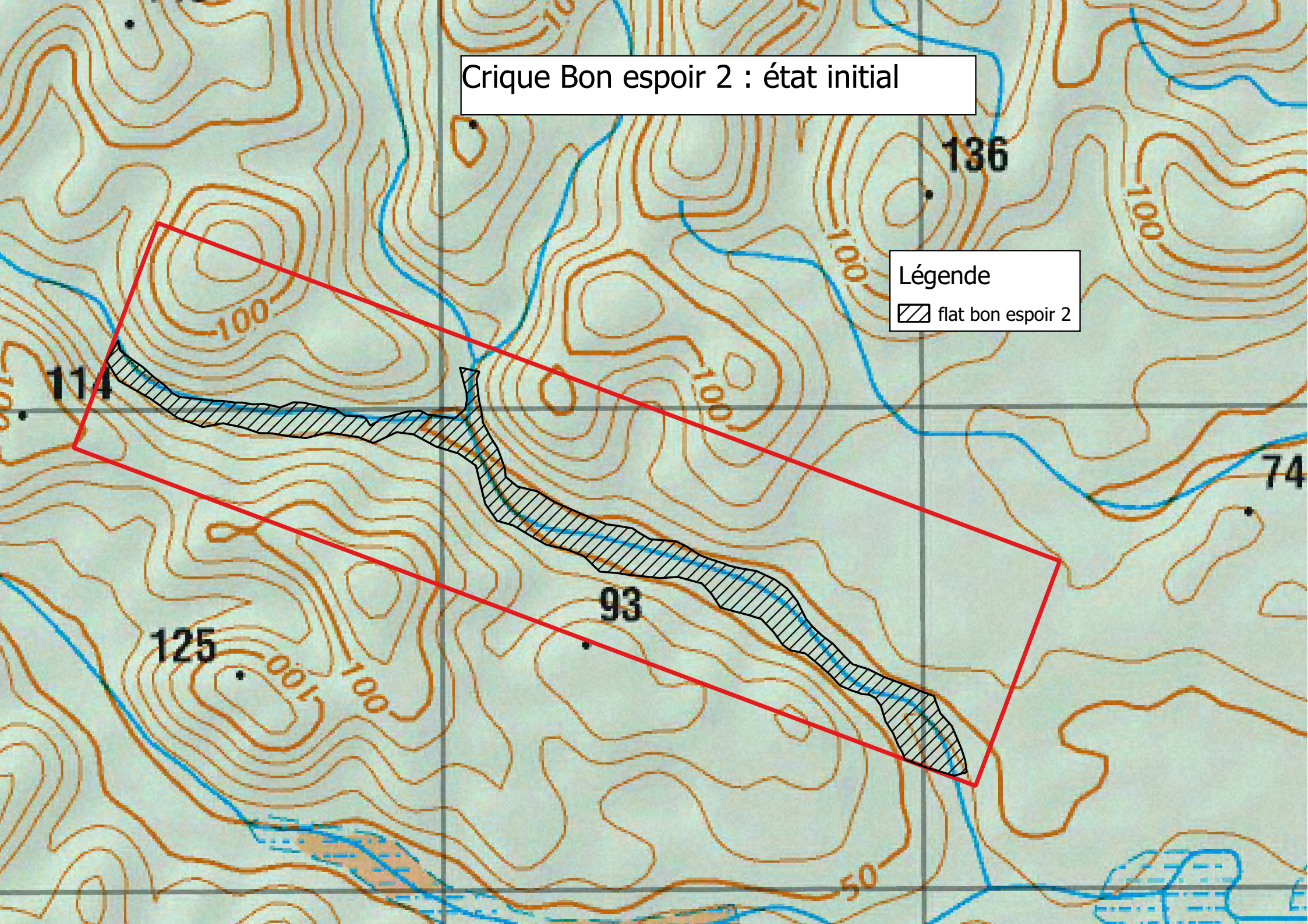


Crique Bon espoir 2 : état initial

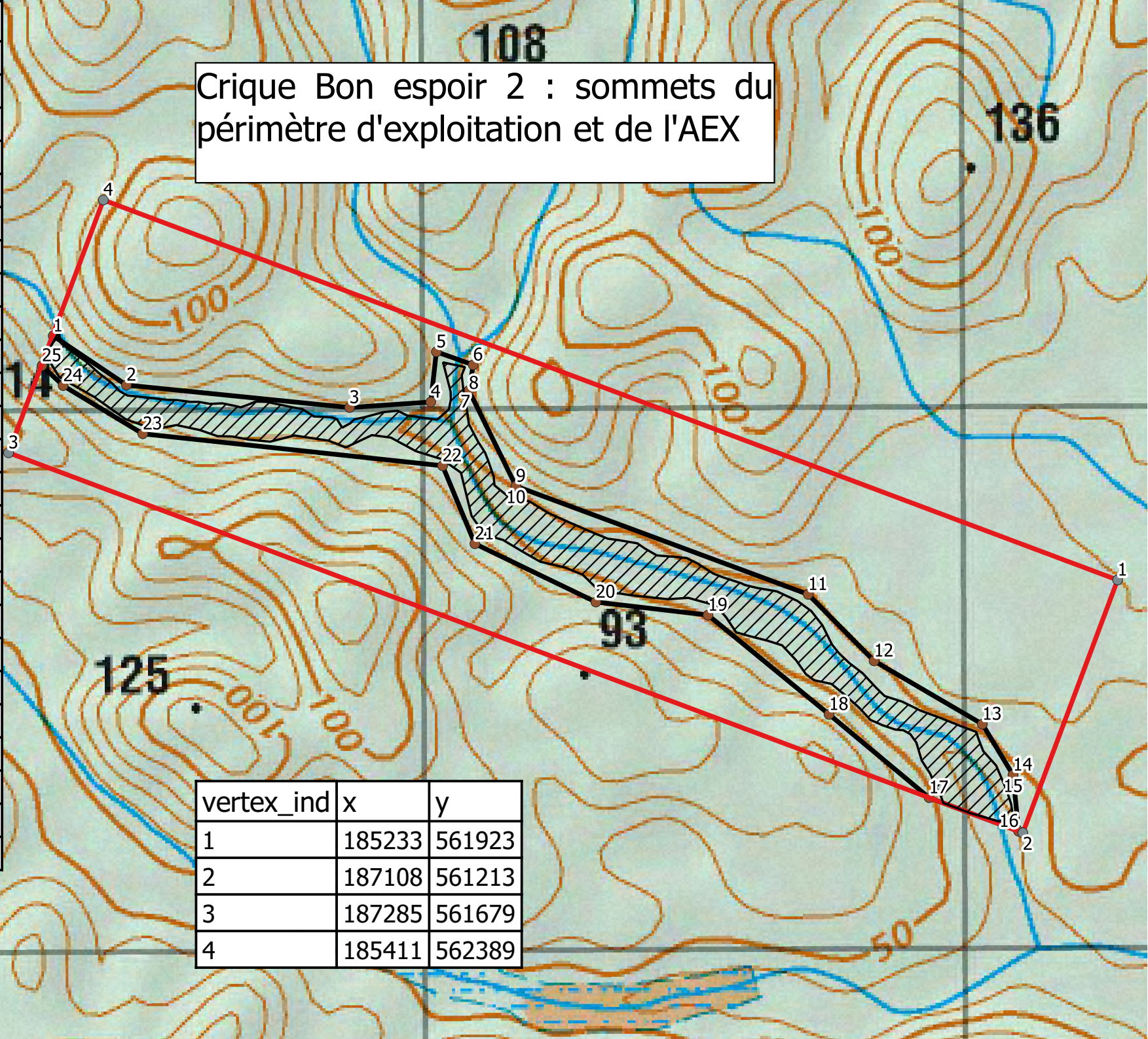
Légende

 flat bon espoir 2



vertex_ind	x	y
1	185317	562138
2	185452	562047
3	185865	562004
4	186015	562013
5	186026	562106
6	186094	562081
7	186086	562034
8	186086	562034
9	186172	561857
10	186172	561857
11	186713	561655
12	186834	561531
13	187034	561414
14	187090	561319
15	187090	561319
16	187100	561216
17	186935	561278
18	186750	561433
19	186527	561617
20	186319	561642
21	186096	561751
22	186037	561895
23	185482	561957
24	185335	562046
25	185296	562083




Crique Bon espoir 2 : sommets du périmètre d'exploitation et de l'AEX

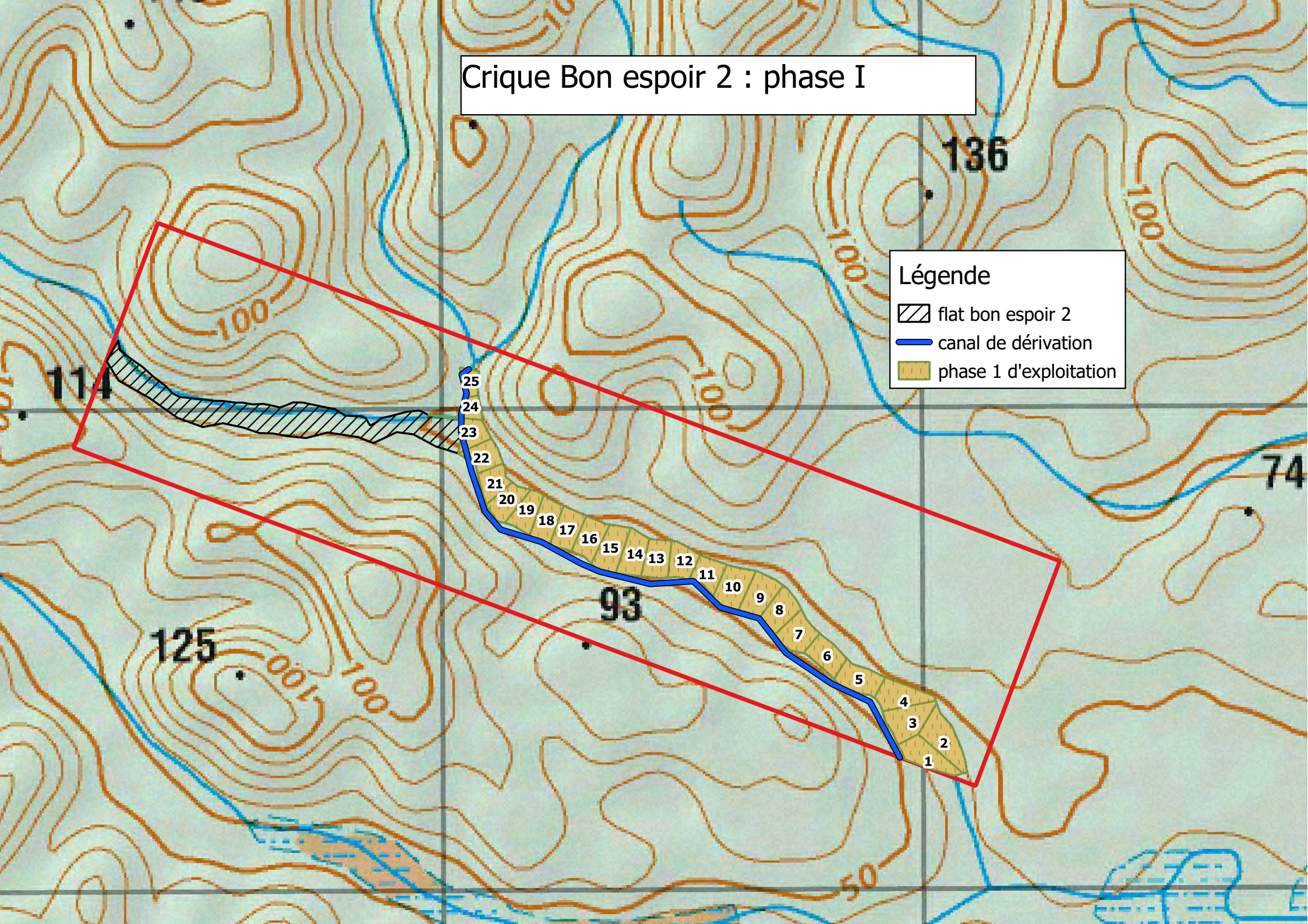


vertex_ind	x	y
1	185233	561923
2	187108	561213
3	187285	561679
4	185411	562389

Crique Bon espoir 2 : phase I





Légende

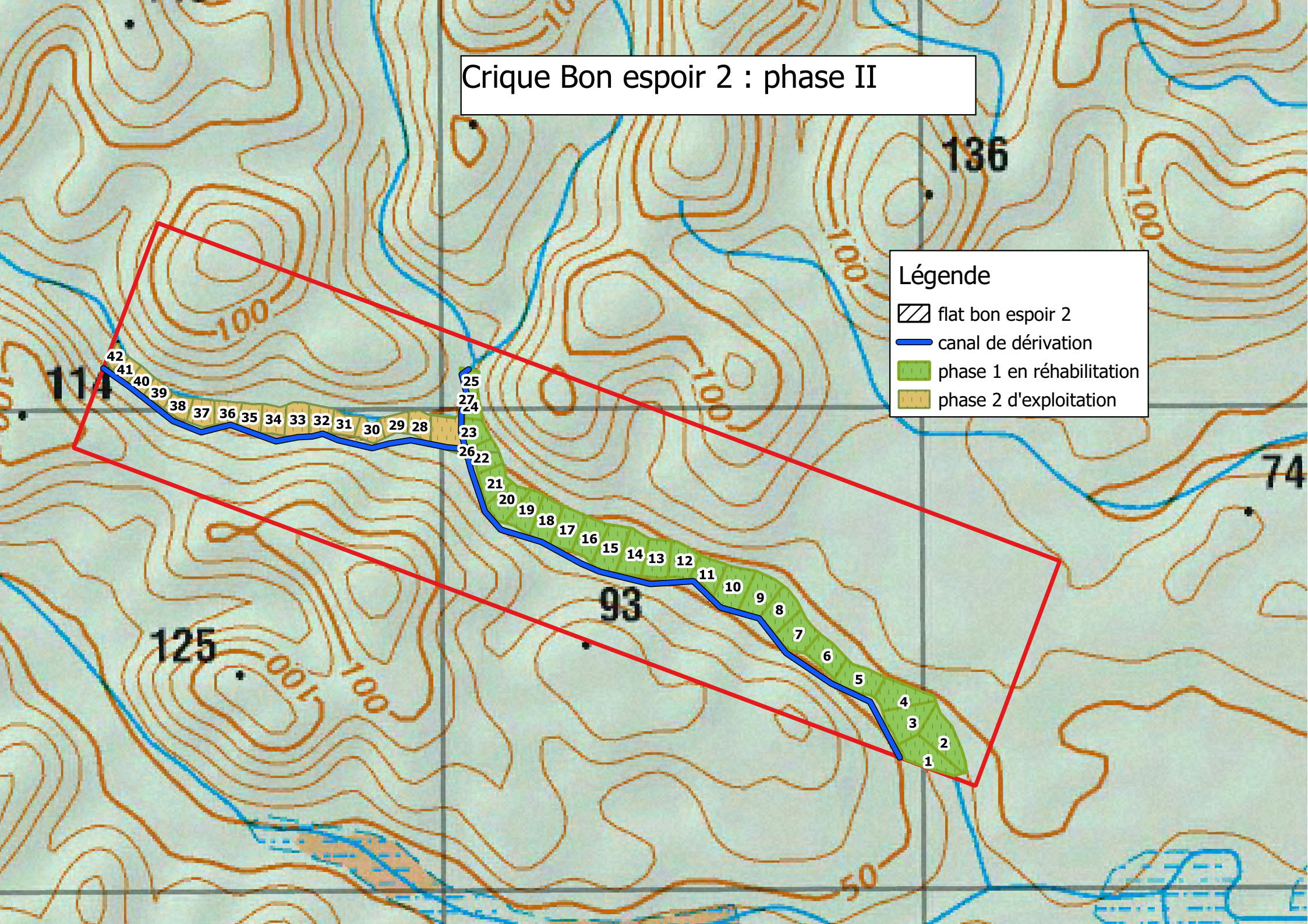
-  flat bon espoir 2
-  canal de dérivation
-  phase 1 d'exploitation



Crique Bon espoir 2 : phase II




Légende

-  flat bon espoir 2
-  canal de dérivation
-  phase 1 en réhabilitation
-  phase 2 d'exploitation



Crique Bon espoir 2 : réhabilitation

Légende

-  flat bon espoir 2
-  flat réhabilité
-  crique remodelée

